



Application Guide

Joints and Junctions

Hardie™ Architectural Collection

EXTERIORS

Australia August 2024

Make sure your information is up to date.

When specifying or installing Hardie™ products, ensure you have the current installation guide. If in doubt, or you need more information, visit www.jameshardie.com.au or Ask James Hardie™ on 13 11 03.



CONTENTS

INTRODUCTION	3
HARDIE™ ARCHITECTURAL COLLECTION: YOUR MODERN BUILD SOLUTION	4
HARDIE™ ARCHITECTURAL COLLECTION PRODUCT SUITE	6
HOW TO USE THIS GUIDE	8
PANEL TO WEATHERBOARD COMBINATIONS	10
DIRECT FIX	14
CAVITY FIX	16
PANEL TO BOARD COMBINATIONS	18
DIRECT FIX	22
CAVITY FIX	25
PANEL TO PANEL COMBINATIONS	28
DIRECT FIX	32
CAVITY FIX	34
WHERE TO NEXT?	37

SCOPE

This Application Guide provides a number of joint and junction options which have been designed by James Hardie to facilitate the joining of different Hardie™ products. This Application Guide should be read in conjunction with, and not instead of, the relevant Installation Guides.

Introduction

The Hardie™ Architectural Collection offers a modern, simple integrated solution of selected Hardie™ fibre cement products and Hardie™ accessories to deliver fresh looks with the trusted protection and lasting beauty of Hardie™ fibre cement technology.

This Application Guide gives builders and design professionals the confidence to bring cladding profiles from the Hardie™ Architectural Collection together at corners and junctions, with approved solutions from James Hardie.

For directions on how to install each individual product, refer to the product Installation Guides in the [James Hardie Technical Library](#).

It's Possible™ to make modern like never before, from the ground up.

IMPORTANT NOTES

1. Failure to install, finish or maintain this product in accordance with applicable building codes, regulations, standards and James Hardie's written application instructions may lead to personal injury, affect system performance, violate local building codes, and void the Hardie™ product warranty.
2. All warranties, conditions, liabilities (direct, indirect or consequential) and obligations whether arising in contract, tort or otherwise other than those specified in the Hardie™ product warranty are excluded to the fullest extent allowed by law. For Hardie™ product warranty information, visit www.jameshardie.com.au.
3. The builder must ensure the product meets aesthetic requirements before installation. James Hardie will not be responsible for rectifying aesthetic surface variations following installation. For information relating to the installation, accessories, tools and safe work practices of any Hardie™ product, refer to the current installation guide and all the relevant technical literature at www.jameshardie.com.au.

The specifier or other responsible party for the project must ensure the information and details in this guide are appropriate for the intended application. Specific design and detailing must be undertaken for areas which fall outside the scope of this documentation.

Your modern build solution

**Hardie™ Brushed
Concrete Cladding and
Linea™ Weatherboard**

Design and Build:
Orton Building



Hardie™ Architectural Collection is transforming the way Australia builds modern homes.

The Hardie™ Architectural Collection helps to facilitate versatile design and result in the modern façades that homeowners love. Created to complement one another, each of the distinctive cladding textures and profiles in this collection can be teamed with any other for a cohesive, ground-up build.

This guide will help take the guess work out of connecting cladding combinations.

**Axon™ Cladding and
Stria™ Cladding**

Building Designer:
Lachlan Walsh Design



**Stria™ Cladding and
Hardie™ Fine
Texture Cladding**

Design and Build:
S Group



Design Versatility: A curated collection of cladding with distinctive textures and profiles that can be painted any colour and combined for personalised looks.



Reduced Complexity: Single Trade Installation – all Hardie™ Architectural Collection products can be installed by a carpenter and painted on the same day (once any additional sealants have cured).



Durability: Made from Hardie™ fibre cement, Hardie™ Architectural Collection products are durable, resistant to damage from moisture and termites, and deemed non-combustible.



Connect with Confidence: James Hardie designed and approved joint and junction details.

Product Su



The Hardie™ Architectural Collection features a range of distinctive exterior cladding textures and profiles, including Hardie™ Brushed Concrete Cladding, Hardie™ Oblique Cladding and more. Created with complementarity in mind, each product takes design versatility to a new level.

Made from Hardie™ fibre cement, every product in the curated collection delivers trusted protection and long-lasting beauty.

ite



Hardie™ Brushed Concrete Cladding

Fresh, flowing lines for a sophisticated tactile finish.



Hardie™ Fine Texture Cladding

Achieve a modern, minimalist aesthetic with a smooth, natural sand texture and a fine matte finish.



Axon™ Cladding

Bring beauty, drama and fine detail to your walls with clean vertical lines.



Hardie™ Oblique™ Cladding

Grooves with square and angled edges evoke a bold, contemporary aesthetic.



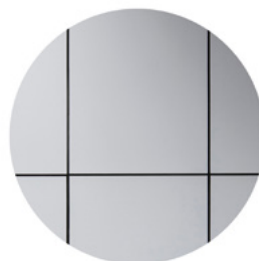
Stria™ Cladding

Bold lines suit modern designs – add versatility with varying widths and orientations.



Linea™ Weatherboard

A deep-shadow weatherboard offers clean horizontal lines for contemporary looks.



Matrix™ Cladding

Bring a bold, industrial aesthetic with a panelised, geometric look.

How to use this guide



Hardie™ Brushed Concrete Cladding and Axon™ Cladding

Design and Build:
Futureflip

From product selection to installation, Hardie™ Architectural Collection is your uncomplicated, integrated cladding solution for modern builds. Follow our step-by-step approach for long-lasting modern homes your clients will love.

Step 1: Decide on Your Look

Explore popular modern looks and the cladding required to achieve them through our suite of inspirational tools:

- a. [Hardie™ Architectural Collection website](#)
- b. [Instagram](#), [Facebook](#) (@jameshardieau), [Pinterest](#) (@jameshardieau1)
- c. [Hardie™ Home Guide: Homeowners guide to building and renovating](#)
- d. [Creating a Modern Look for your home](#)

Step 2: Identify Your Cladding Combination

Once you have selected your look and cladding, identify the appropriate cladding combination, based on the classification below. For example, a build with Hardie™ Brushed Concrete Cladding on the ground floor and Linea™ Weatherboard on the first floor would be a Panel to Weatherboard combination.

Step 3: Details to Guide You

Turn to the appropriate section of this guide to find various joint and junction options for installing multiple cladding products using Hardie™ accessories. Choose from:

- [Panel to Weatherboard](#) (Page 10)
- [Panel to Board](#) (Page 18)
- [Panel to Panel](#) (Page 28)



Panels

From embedded texture finishes to vertical joint detailing, these 1200mm-wide panels are quick to install and bring subtle textures or profiles to façades.



**Hardie™ Brushed
Concrete Cladding**



**Hardie™ Fine
Texture Cladding**



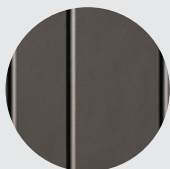
**Axon™
Cladding**

Boards

At 14mm thick and with varying widths, Hardie™ fibre cement boards are individually installed to create feature grooves. Orient vertically or horizontally and use Hardie™ accessories to combine with any Hardie™ panel cladding.



**Stria™
Cladding**



**Hardie™ Oblique™
Cladding**

Weatherboard

Deep-shadow 16mm-thick weatherboards enable clean butt joints. Combine with Hardie™ panels across multiple levels of a home, or to highlight architectural features.



**Linea™
Weatherboard**

Panel to Weatherboard Combinations

The deep-shadow lines of Linea™ Weatherboard complement the embedded texture or subtle lines of Hardie™ panel cladding, creating fresh modern looks, from Modern Coastal to Barn style homes.



Hardie™ Brushed Concrete Cladding and Linea™ Weatherboard

Design and Build:
Orton Building



**Linea™ Weatherboard
and Axon™ Cladding**

Design and Build:
Futureflip





**Linea™ Weatherboard and
Hardie™ Fine Texture Cladding**
Design and Build: Futureflip



**Linea™ Weatherboard
and Axon™ Cladding**
Building Designer:
Big House Little House



Turn the page for comprehensive guidance on direct fix or cavity fix installation, using Hardie™ accessories.

**Linea™ Weatherboard
and Axon™ Cladding**
Building Designer:
Void Building Design

1 DIRECT FIX

PANEL

WEATHERBOARD

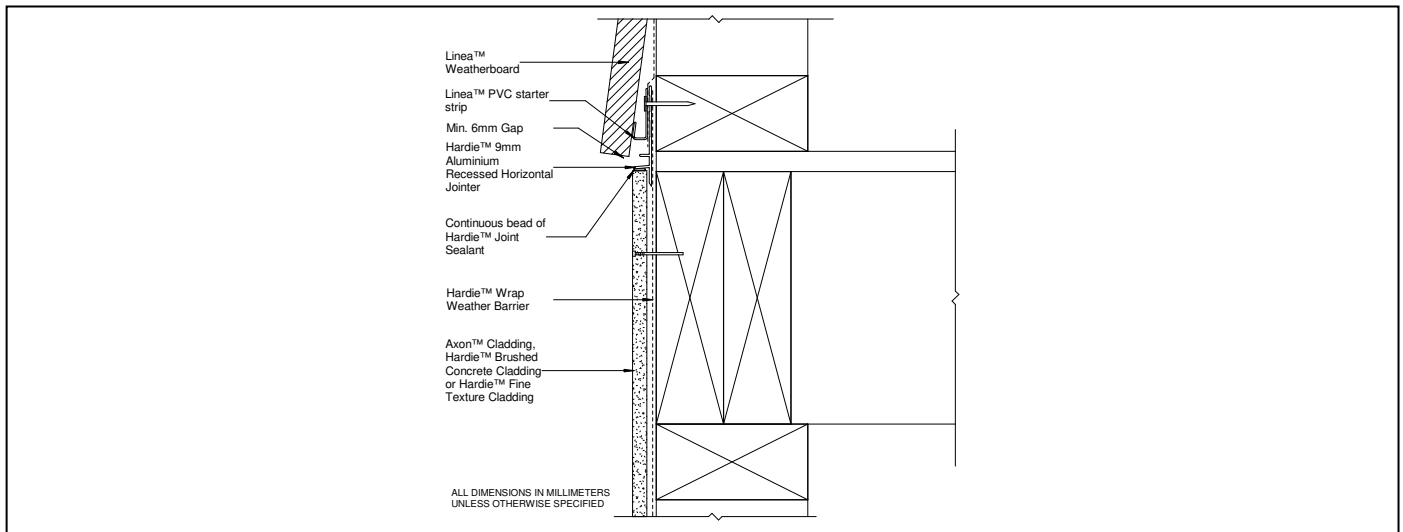
Hardie™ Brushed Concrete Cladding

Hardie™ Fine Texture Cladding

Axon™ Cladding

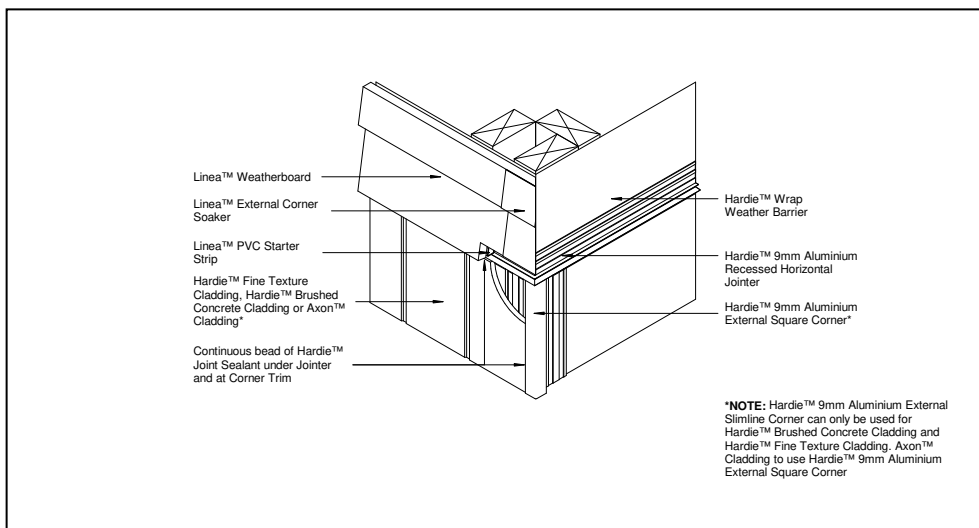
+

Linea™ Weatherboard



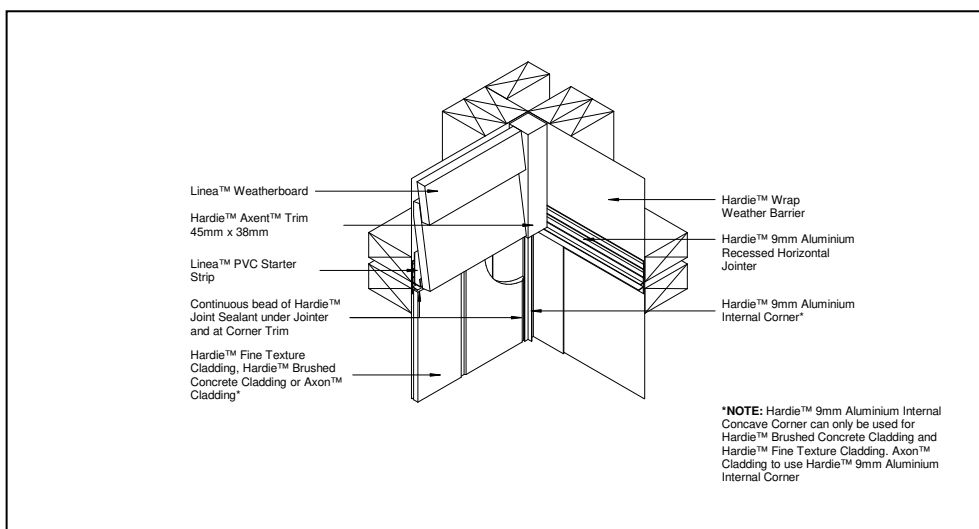
PANEL TO WEATHERBOARD - UPPER FLOOR JUNCTION DIRECT FIX

AUS-HAC-PANELBOARD-DF-016



PANEL TO WEATHERBOARD - EXTERNAL CORNER HORIZONTAL JUNCTION DIRECT FIX

AUS-HAC-PANELBOARD-DF-017



PANEL TO WEATHERBOARD - INTERNAL CORNER HORIZONTAL JUNCTION DIRECT FIX

AUS-HAC-PANELBOARD-DF-018

1 DIRECT FIX

PANEL

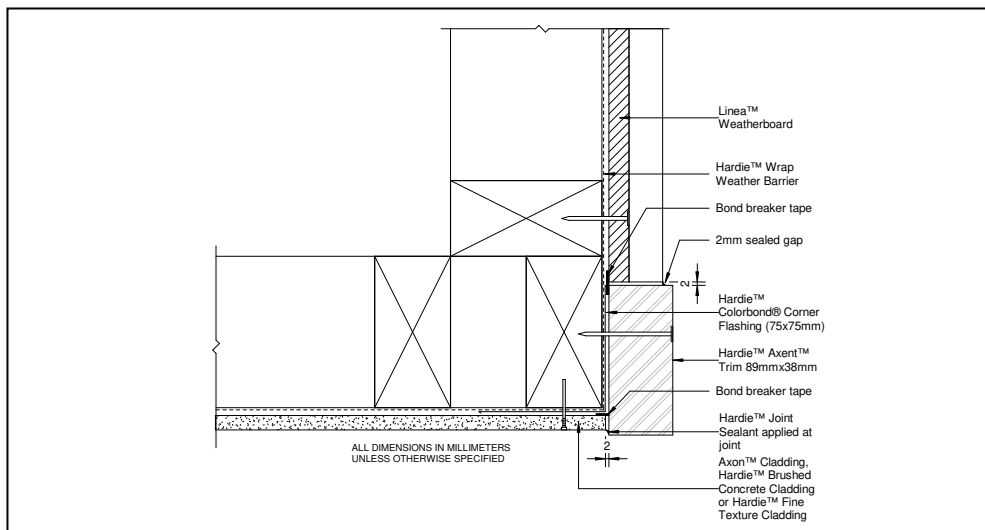
WEATHERBOARD

Hardie™ Brushed
Concrete Cladding

Hardie™ Fine
Texture Cladding

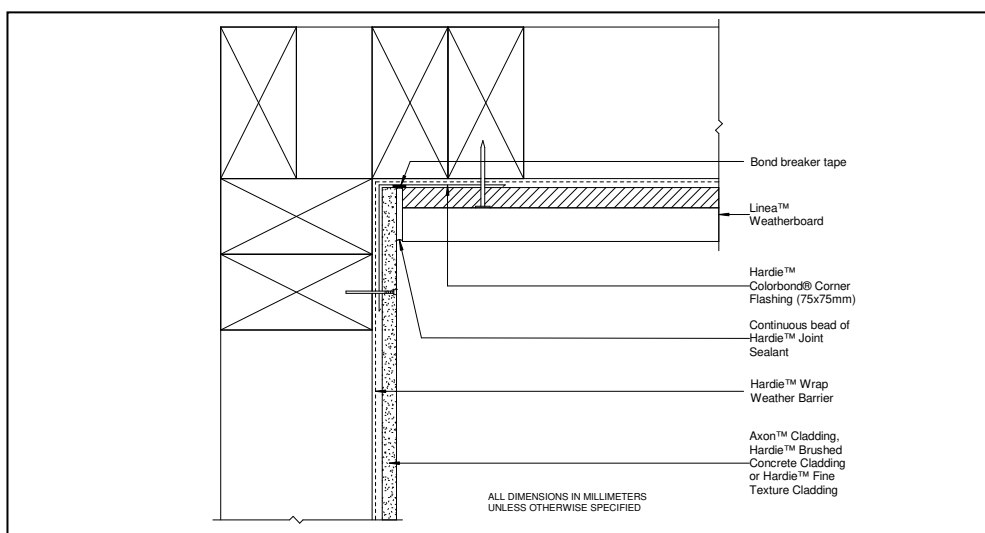
Axon™ Cladding

Linea™
Weatherboard



PANEL TO WEATHERBOARD - EXTERNAL CORNER VERTICAL JUNCTION DIRECT FIX

AUS-HAC-PANELBOARD-DF-019



PANEL TO WEATHERBOARD - INTERNAL CORNER VERTICAL JUNCTION DIRECT FIX

AUS-HAC-PANELBOARD-DF-020

IMPORTANT INFORMATION

The information in this technical detail is given as a guide and is intended for use in relation to the relevant Hardie™ products only. The customer's project designer is ultimately responsible for design and detailing to ensure the relevant product use, in conjunction with these details, is fit for purpose in the context of the specific project. The customer's project designer needs to give extra consideration to product suitability to take into account any specialised factors of the project. The specific joint/junction detail must be reviewed in conjunction with the relevant Hardie™ product installation guide, current at the time of purchase, and all other relevant Hardie™ technical literature.

2 CAVITY FIX

PANEL

WEATHERBOARD

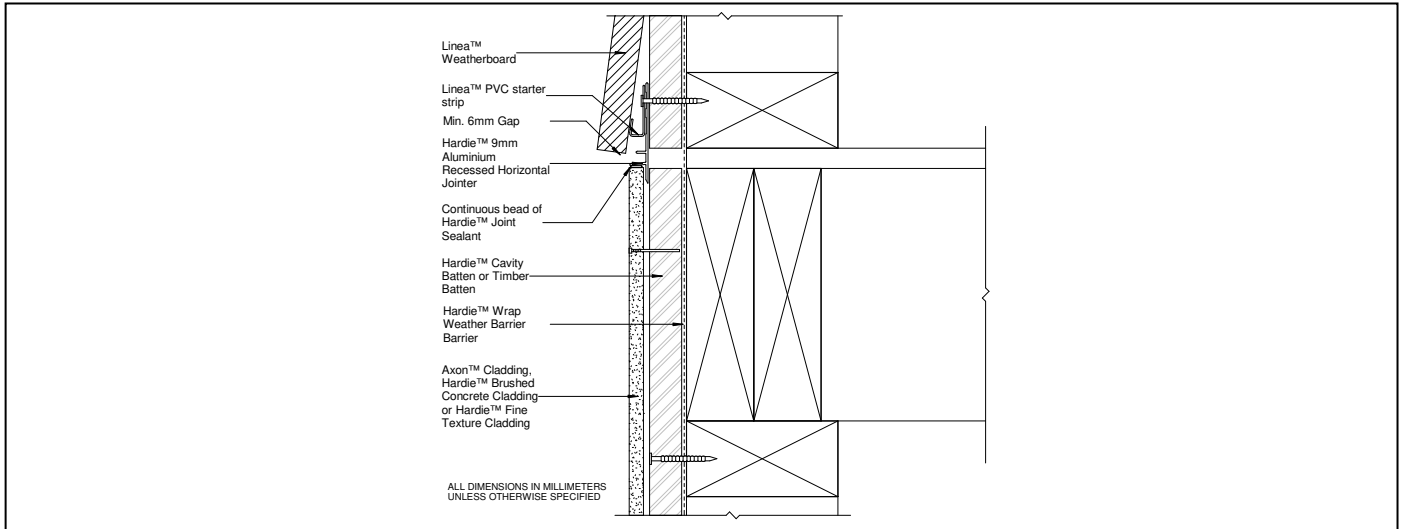
Hardie™ Brushed
Concrete Cladding

Hardie™ Fine
Texture Cladding

Axon™ Cladding

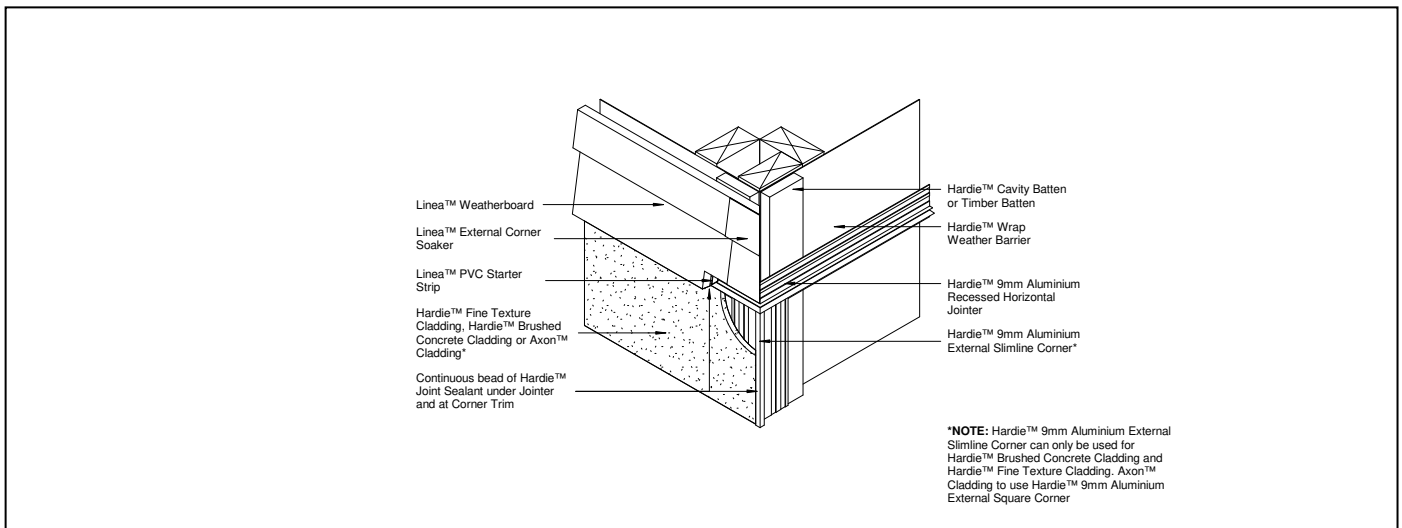
+

Linea™
Weatherboard



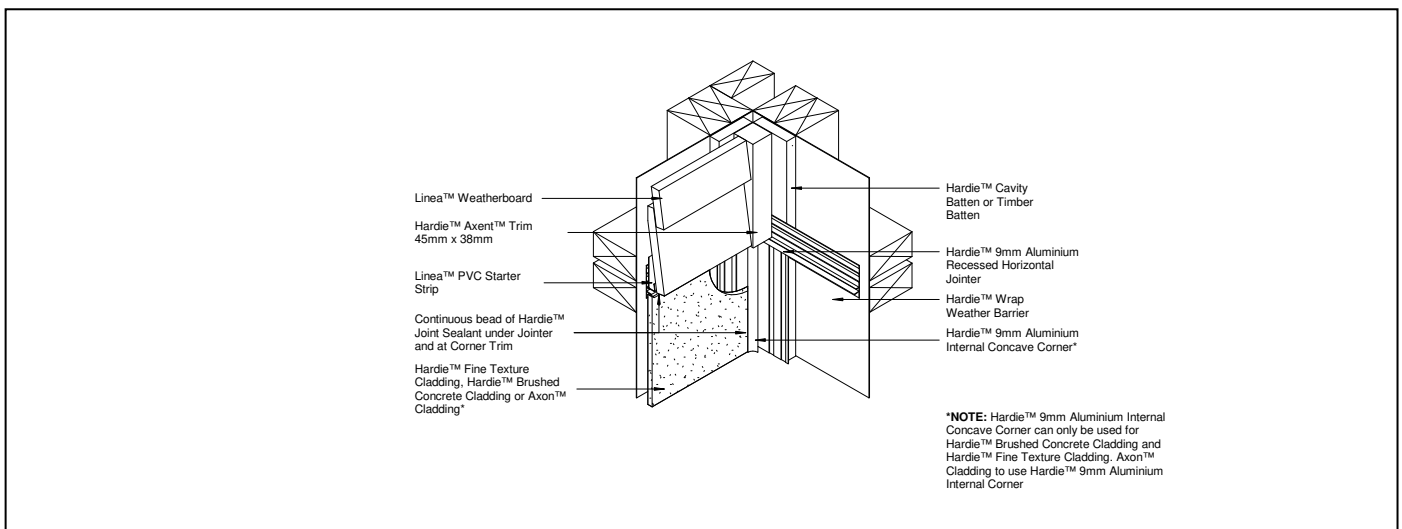
PANEL TO WEATHERBOARD - UPPER FLOOR JUNCTION CAVITY FIX

AUS-HAC-PANELBOARD-CF-011



PANEL TO WEATHERBOARD - EXTERNAL CORNER HORIZONTAL JUNCTION CAVITY FIX

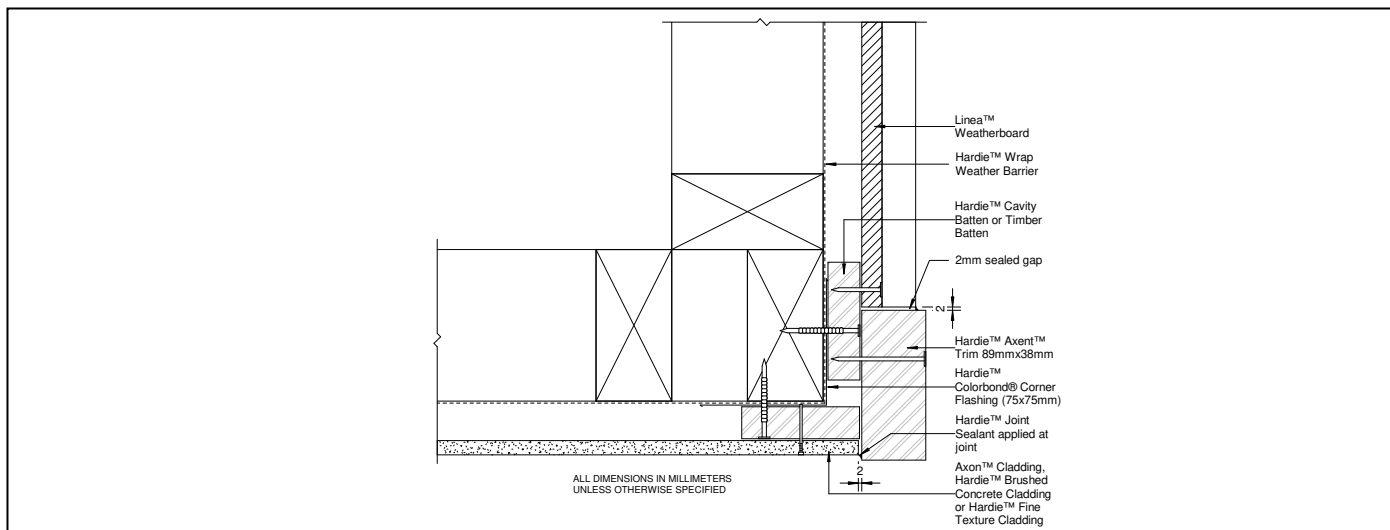
AUS-HAC-PANELBOARD-CF-012



PANEL TO WEATHERBOARD - INTERNAL CORNER HORIZONTAL JUNCTION CAVITY FIX

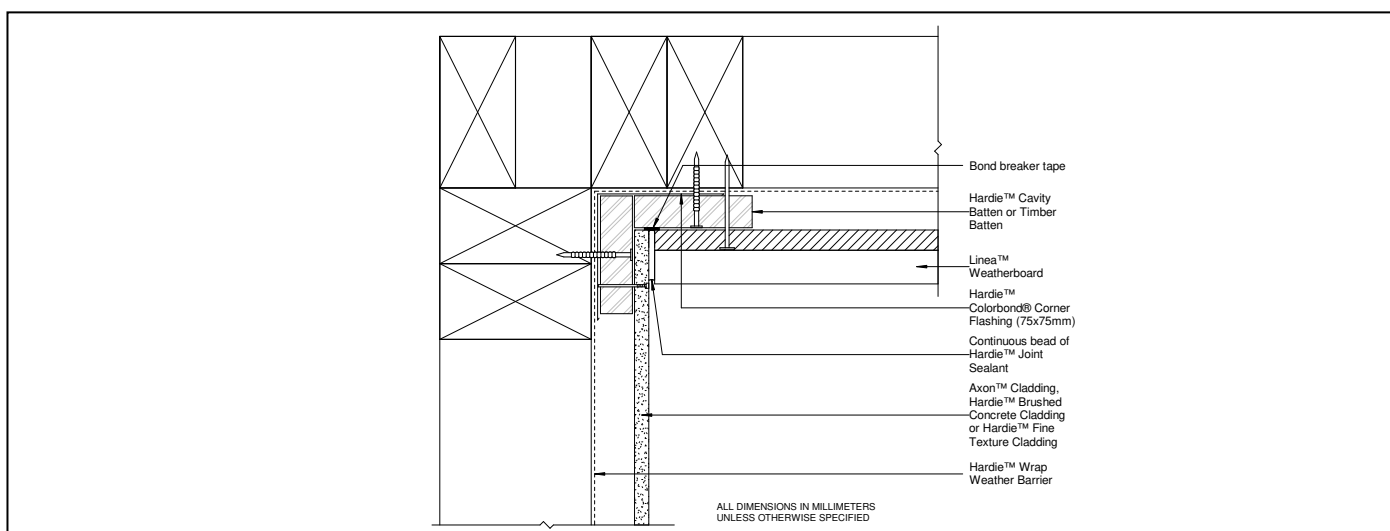
AUS-HAC-PANELBOARD-CF-013

2 CAVITY FIX



PANEL TO WEATHERBOARD - EXTERNAL CORNER VERTICAL JUNCTION CAVITY FIX

AUS-HAC-PANELBOARD-CF-014



PANEL TO WEATHERBOARD - INTERNAL CORNER VERTICAL JUNCTION CAVITY FIX

AUS-HAC-PANELBOARD-CF-015

IMPORTANT INFORMATION

The information in this technical detail is given as a guide and is intended for use in relation to the relevant Hardie™ products only. The customer's project designer is ultimately responsible for design and detailing to ensure the relevant product use, in conjunction with these details, is fit for purpose in the context of the specific project. The customer's project designer needs to give extra consideration to product suitability to take into account any specialised factors of the project. The specific joint/junction detail must be reviewed in conjunction with the relevant Hardie™ product installation guide, current at the time of purchase, and all other relevant Hardie™ technical literature.



Panel to Board Combinations

**Stria™ Cladding
and Hardie™ Fine
Texture Cladding**

Design and Build:
S Group

Dial up the contemporary look of horizontal and vertical lines, using panels to create a subtle backdrop.



The perfect cladding combination for contemporary looks – think Box Modern or Mid-Century Modern.

Axon™ Cladding and Stria™ Cladding

Building Designer:
Lachlan Walsh Design



Axon™ Cladding and Hardie™ Fine Texture Cladding

Builder: Gilchrist Homes

PANEL

BOARD





Turn the page for comprehensive guidance on direct fix or cavity fix installation, using Hardie™ accessories.

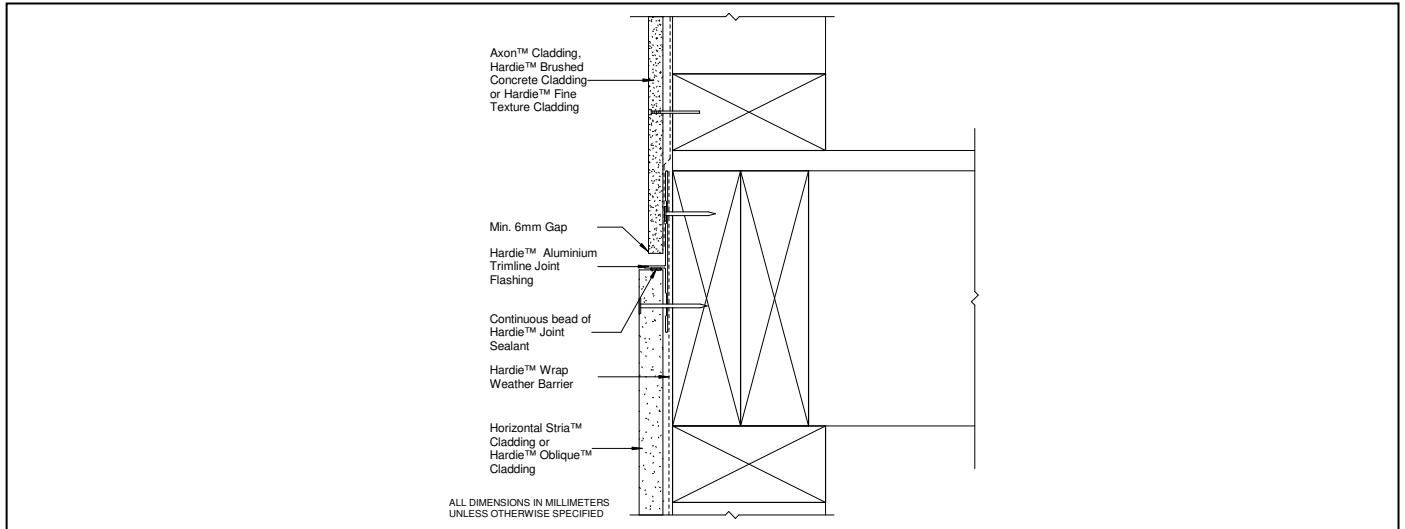


Axon™ Cladding and Stria™ Cladding

Building Designer: South Coast Building Design

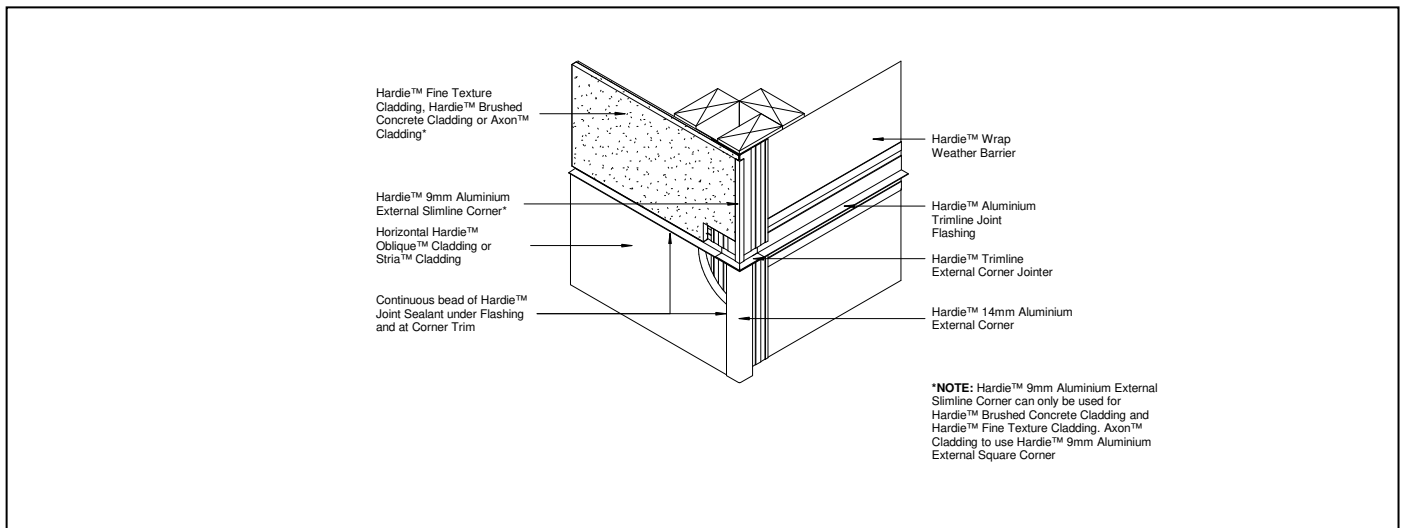
Builder: QBC Constructions

1 DIRECT FIX



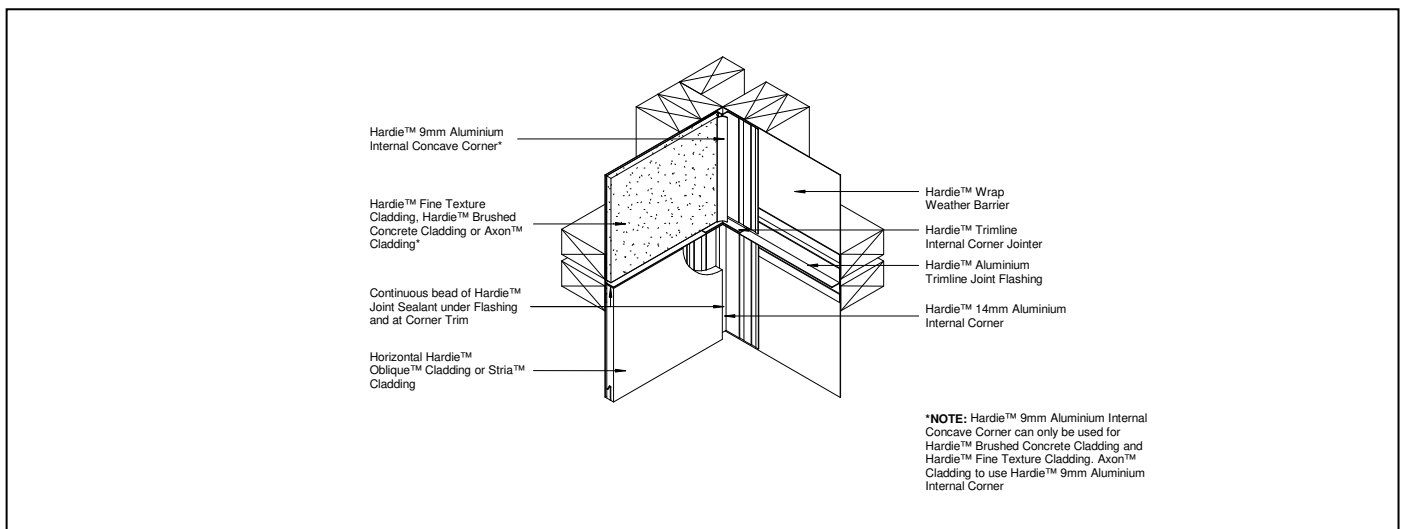
PANEL TO HORIZONTAL BOARD - UPPER FLOOR JUNCTION DIRECT FIX

AUS-HAC-PANELBOARD-H-DF-021



PANEL TO HORIZONTAL BOARD - EXTERNAL CORNER HORIZONTAL JUNCTION DIRECT FIX

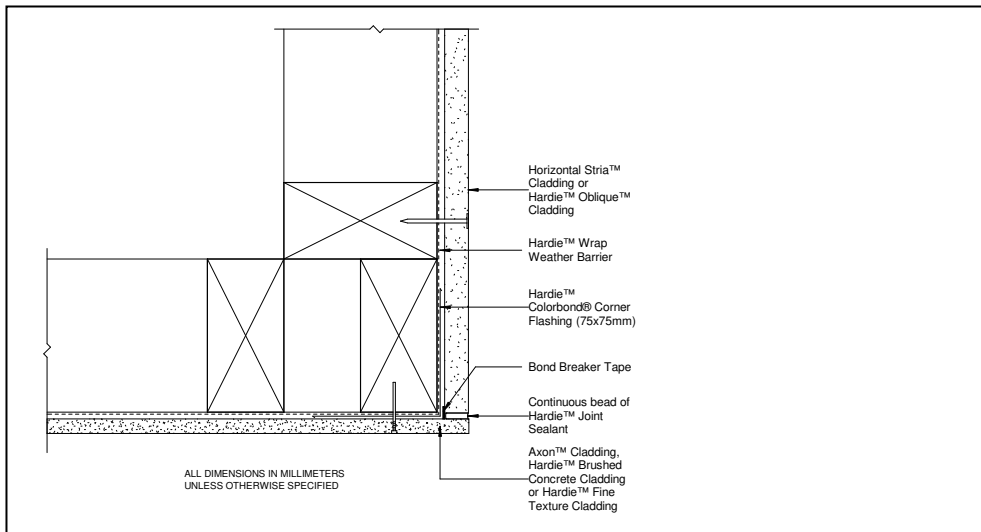
AUS-HAC-PANELBOARD-H-DF-022



PANEL TO HORIZONTAL BOARD - INTERNAL CORNER HORIZONTAL JUNCTION DIRECT FIX

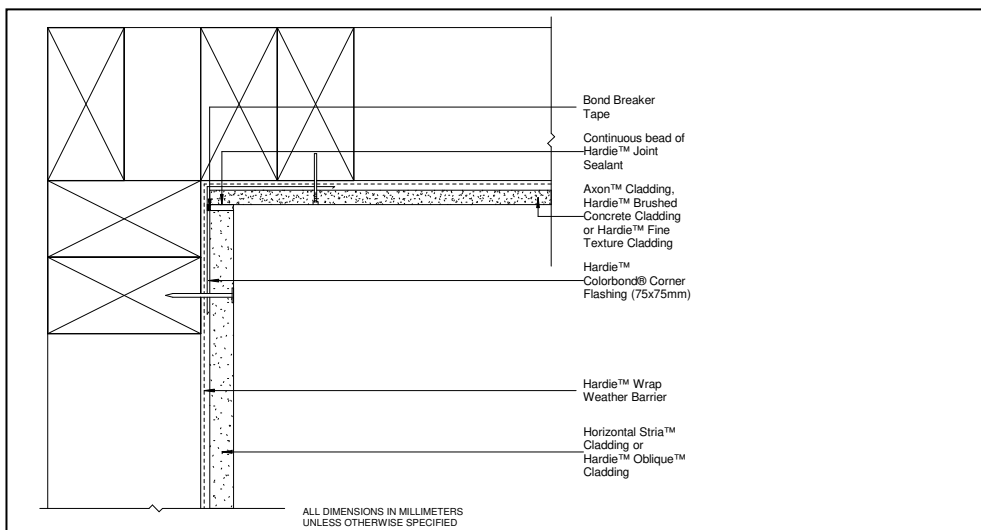
AUS-HAC-PANELBOARD-H-DF-023

1 DIRECT FIX



PANEL TO HORIZONTAL BOARD - EXTERNAL CORNER VERTICAL JUNCTION DIRECT FIX

AUS-HAC-PANELBOARD-H-DF-024



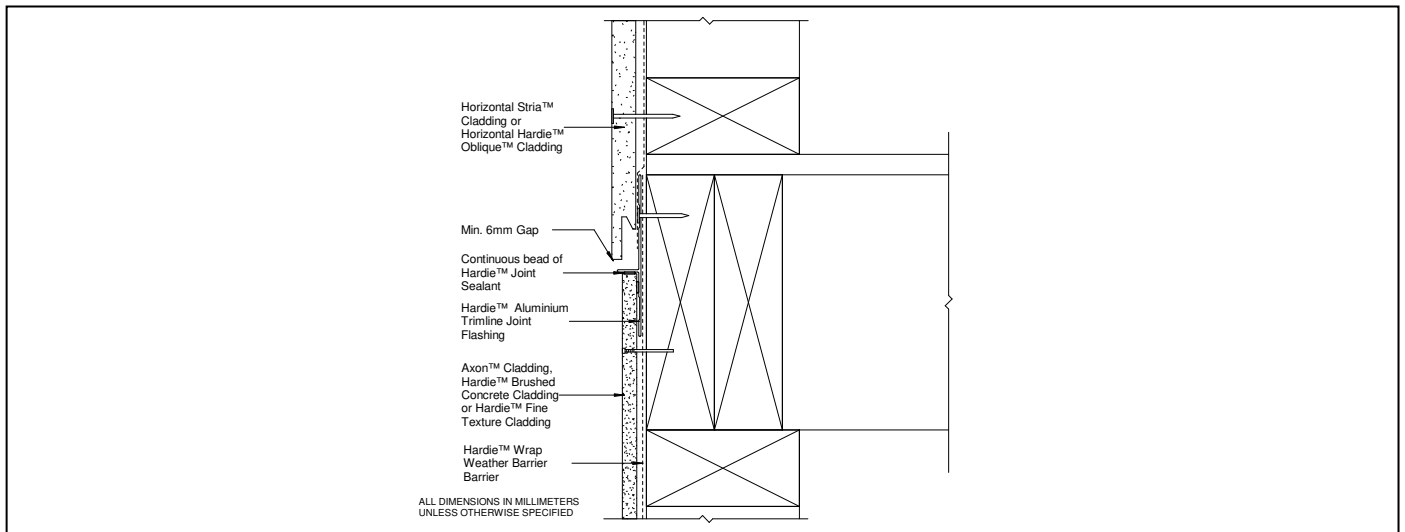
PANEL TO HORIZONTAL BOARD - INTERNAL CORNER VERTICAL JUNCTION DIRECT FIX

AUS-HAC-PANELBOARD-H-DF-025

IMPORTANT INFORMATION

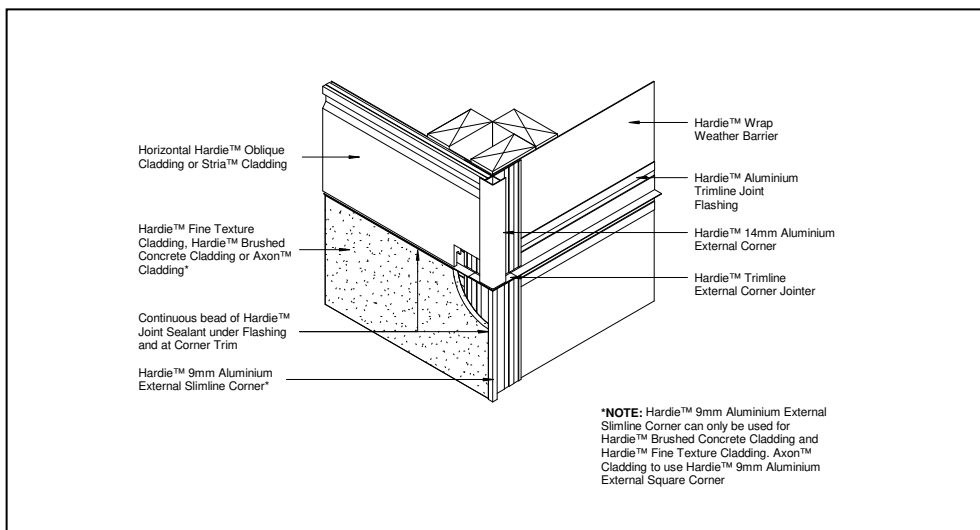
The information in this technical detail is given as a guide and is intended for use in relation to the relevant Hardie™ products only. The customer's project designer is ultimately responsible for design and detailing to ensure the relevant product use, in conjunction with these details, is fit for purpose in the context of the specific project. The customer's project designer needs to give extra consideration to product suitability to take into account any specialised factors of the project. The specific joint/junction detail must be reviewed in conjunction with the relevant Hardie™ product installation guide, current at the time of purchase, and all other relevant Hardie™ technical literature.

1 DIRECT FIX



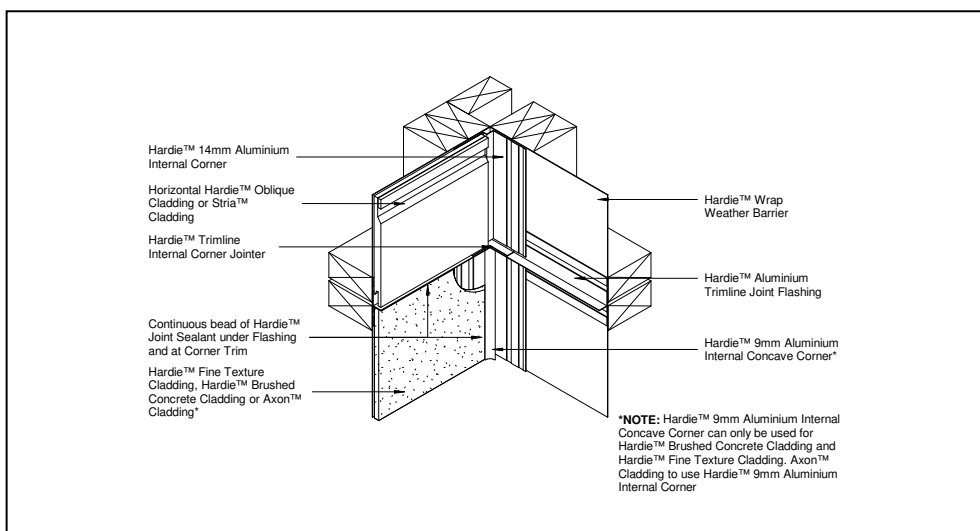
HORIZONTAL BOARD TO PANEL - UPPER FLOOR JUNCTION DIRECT FIX

AUS-HAC-BOARD-HPANEL-DF-031



HORIZONTAL BOARD TO PANEL - EXTERNAL CORNER HORIZONTAL DIRECT FIX

AUS-HAC-BOARD-HPANEL-DF-032



HORIZONTAL BOARD TO PANEL - INTERNAL CORNER HORIZONTAL DIRECT FIX

AUS-HAC-BOARD-HPANEL-DF-033

2 CAVITY FIX

PANEL

BOARD

Hardie™ Brushed Concrete Cladding

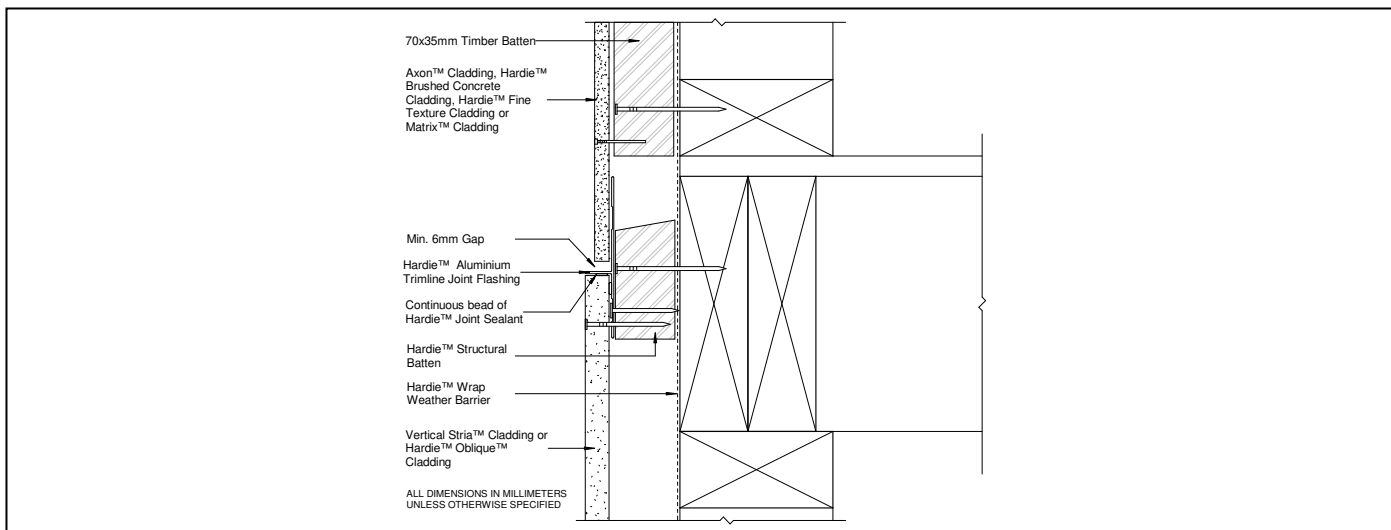
Hardie™ Fine Texture Cladding

Axon™ Cladding

+

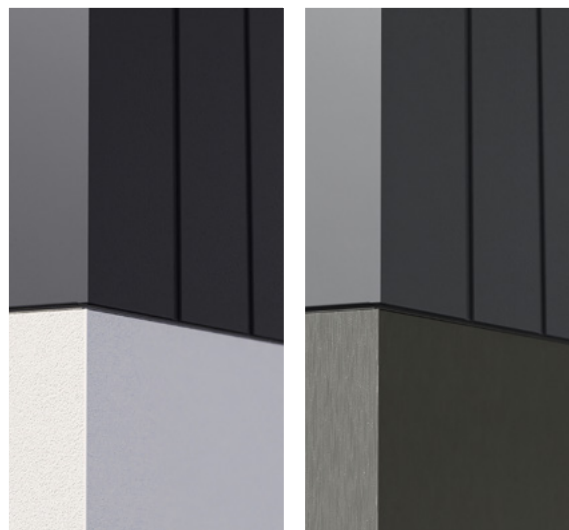
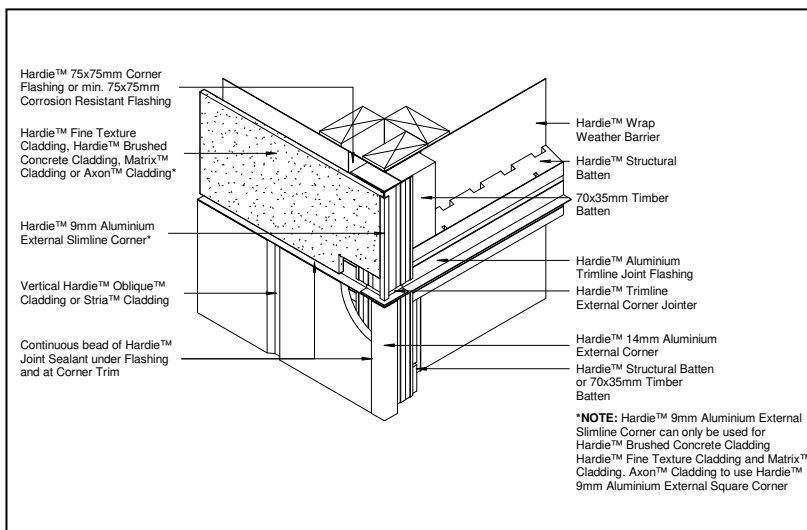
Stria™ Cladding

Hardie™ Oblique™ Cladding



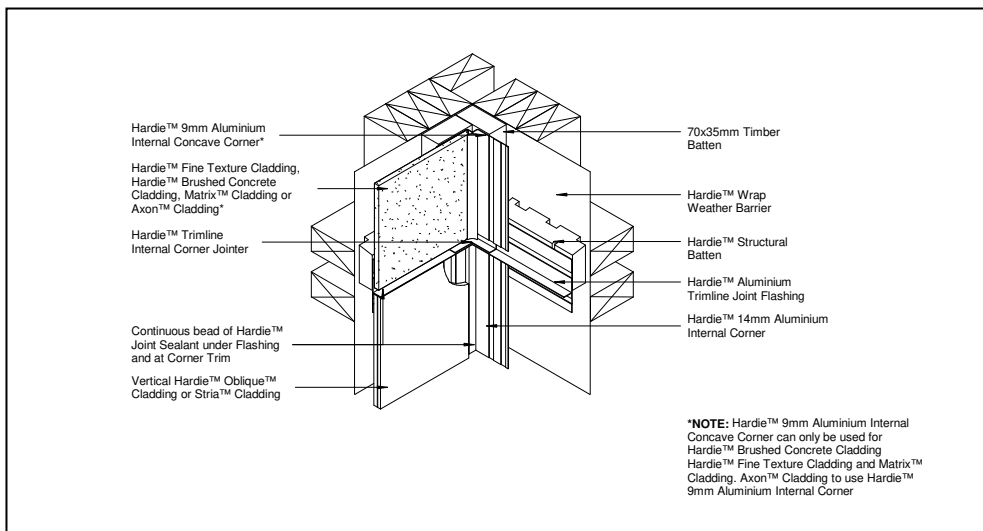
PANEL TO VERTICAL BOARD - UPPER FLOOR JUNCTION CAVITY FIX

AUS-HAC-PANELBOARD-V-CF-026



PANEL TO VERTICAL BOARD - EXTERNAL CORNER HORIZONTAL JUNCTION CAVITY FIX

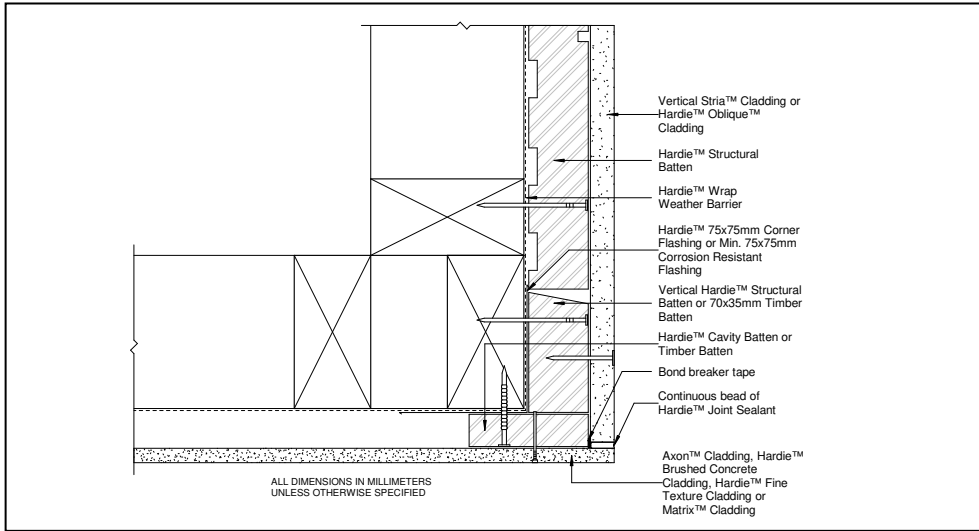
AUS-HAC-PANELBOARD-V-CF-027



PANEL TO VERTICAL BOARD - INTERNAL CORNER HORIZONTAL JUNCTION CAVITY FIX

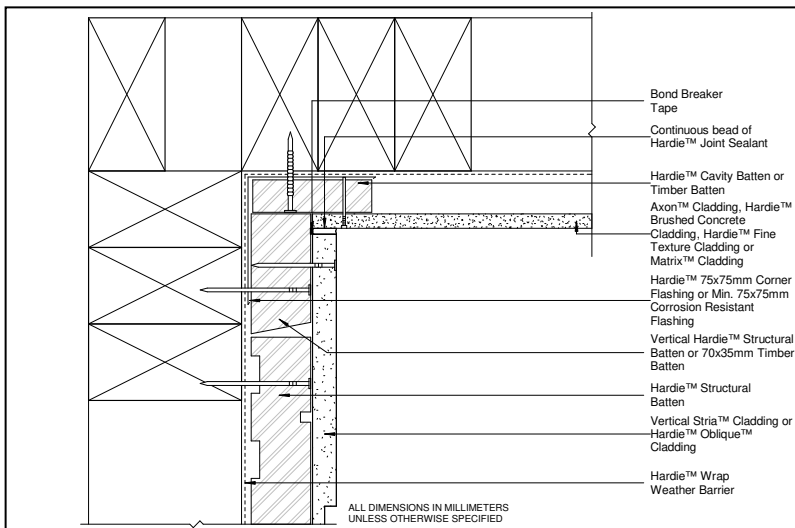
AUS-HAC-PANELBOARD-V-CF-028

2 CAVITY FIX



PANEL TO VERTICAL BOARD - EXTERNAL CORNER VERTICAL JUNCTION CAVITY FIX

AUS-HAC-PANELBOARD-V-CF-029



PANEL TO VERTICAL BOARD - INTERNAL CORNER VERTICAL JUNCTION CAVITY FIX

AUS-HAC-PANELBOARD-V-CF-030

IMPORTANT INFORMATION

The information in this technical detail is given as a guide and is intended for use in relation to the relevant Hardie™ products only. The customer's project designer is ultimately responsible for design and detailing to ensure the relevant product use, in conjunction with these details, is fit for purpose in the context of the specific project. The customer's project designer needs to give extra consideration to product suitability to take into account any specialised factors of the project. The specific joint/junction detail must be reviewed in conjunction with the relevant Hardie™ product installation guide, current at the time of purchase, and all other relevant Hardie™ technical literature.

2 CAVITY FIX

PANEL

BOARD

Hardie™ Brushed Concrete Cladding

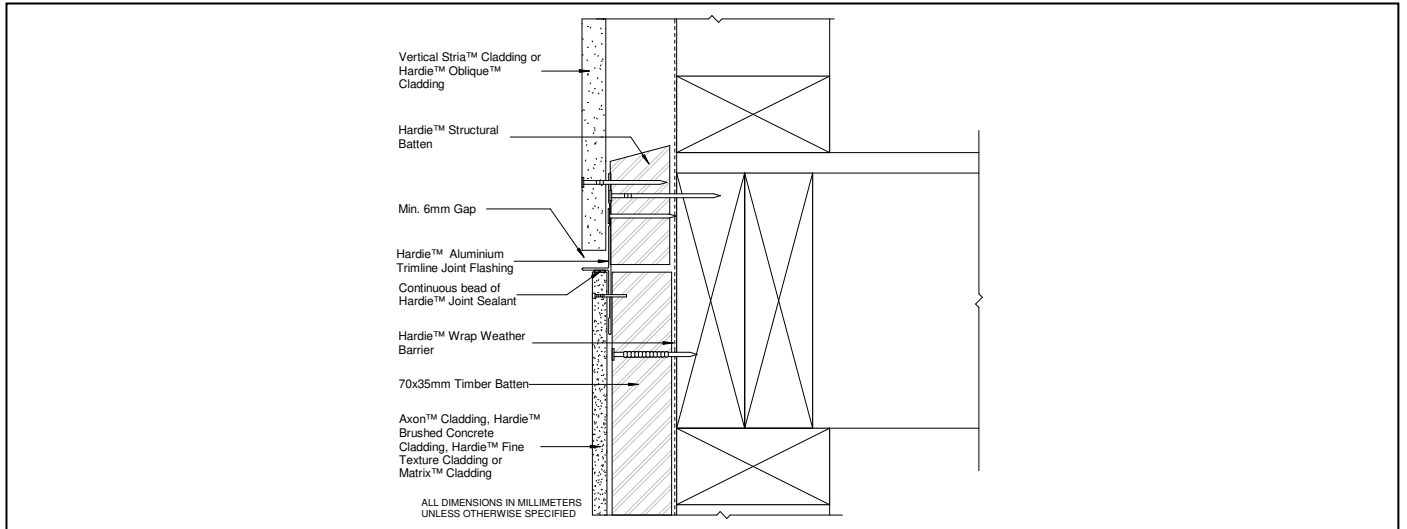
Hardie™ Fine Texture Cladding

Axon™ Cladding

+

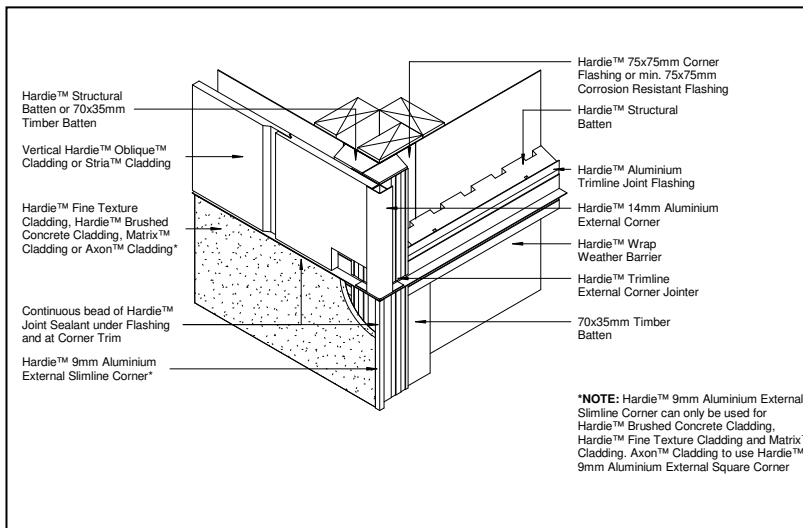
Stria™ Cladding

Hardie™ Oblique™ Cladding



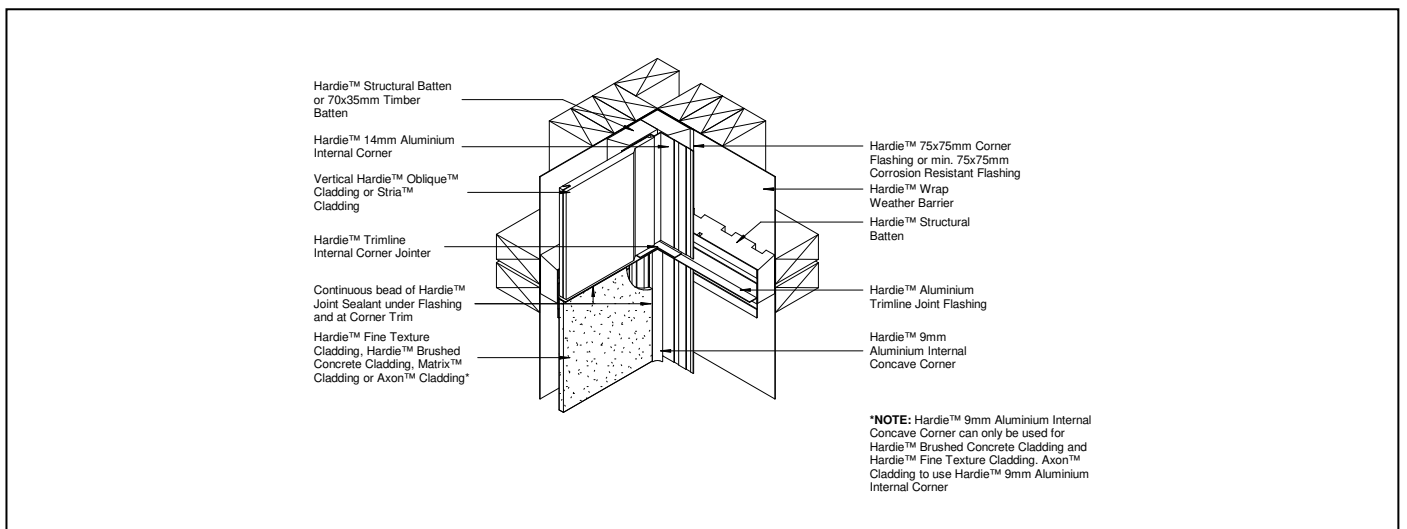
VERTICAL BOARD TO PANEL - UPPER FLOOR JUNCTION CAVITY FIX

AUS-HAC-BOARD-VPANEL-CF-034



VERTICAL BOARD TO PANEL - EXTERNAL CORNER HORIZONTAL JUNCTION CAVITY FIX

AUS-HAC-BOARD-VPANEL-CF-035



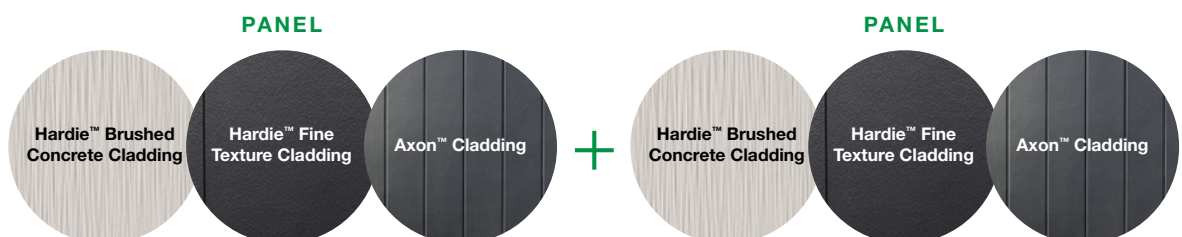
VERTICAL BOARD TO PANEL - INTERNAL CORNER HORIZONTAL JUNCTION CAVITY FIX

AUS-HAC-BOARD-VPANEL-CF-036



Panel to Panel Combinations

Mix and match panels for an effortlessly modern look. The clean vertical lines of Axon™ Cladding shine against the sand texture of Hardie™ Fine Texture Cladding or the artisan cement look of Hardie™ Brushed Concrete Cladding.





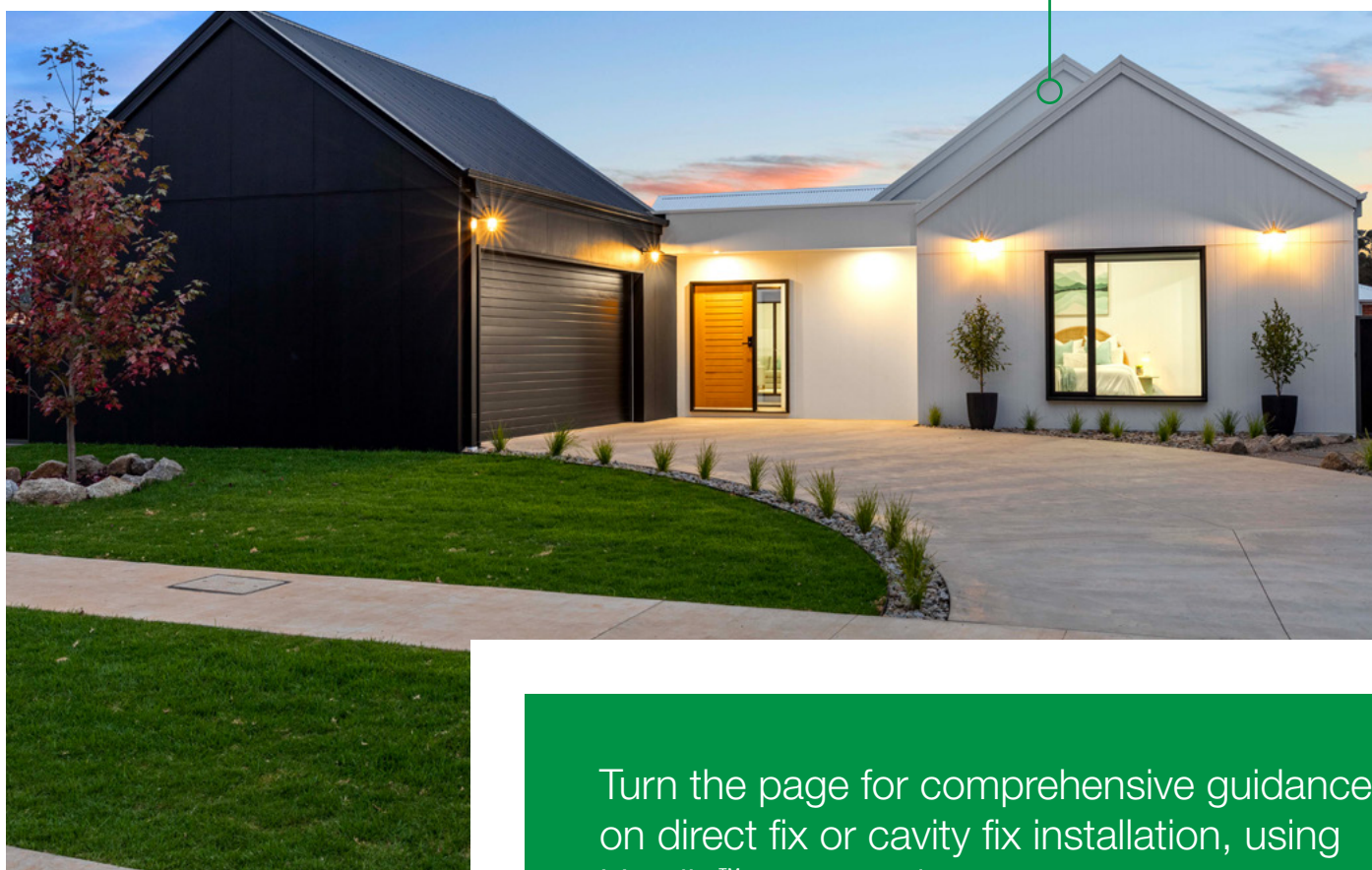
**Hardie™ Fine Texture
Cladding and
Axon™ Cladding**
Builder: Gilchrist Homes



**Hardie™ Fine Texture
Cladding and Axon™
Cladding**
Builder: Gilchrist Homes



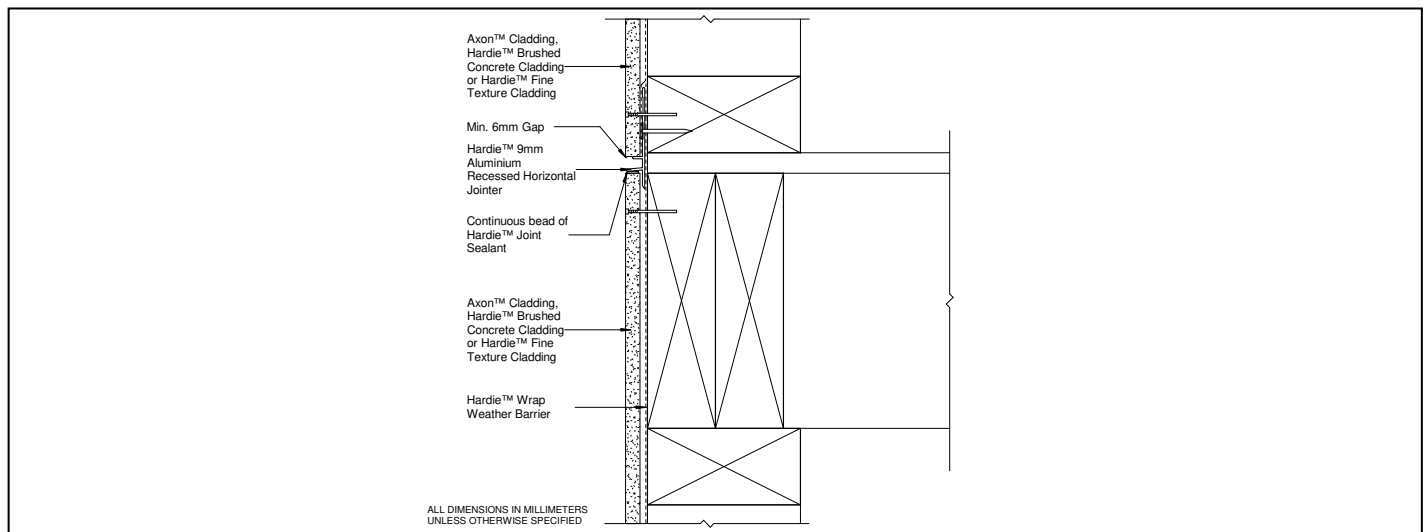
Hardie™ Brushed Concrete Cladding and Axon™ Cladding
Design and Build: Futureflip



Hardie™ Fine Texture Cladding and Axon™ Cladding
Builder: Murray Wearne Builders

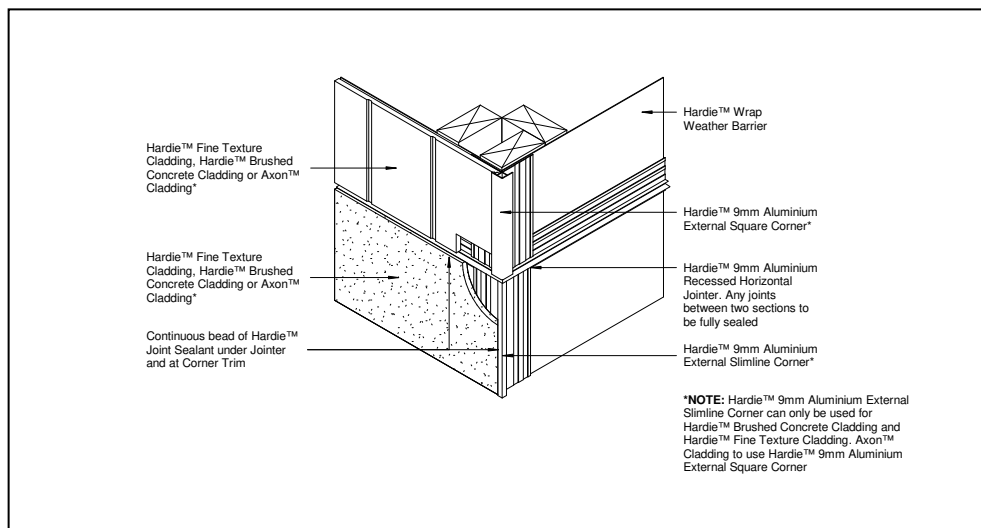
Turn the page for comprehensive guidance on direct fix or cavity fix installation, using Hardie™ accessories.

1 DIRECT FIX



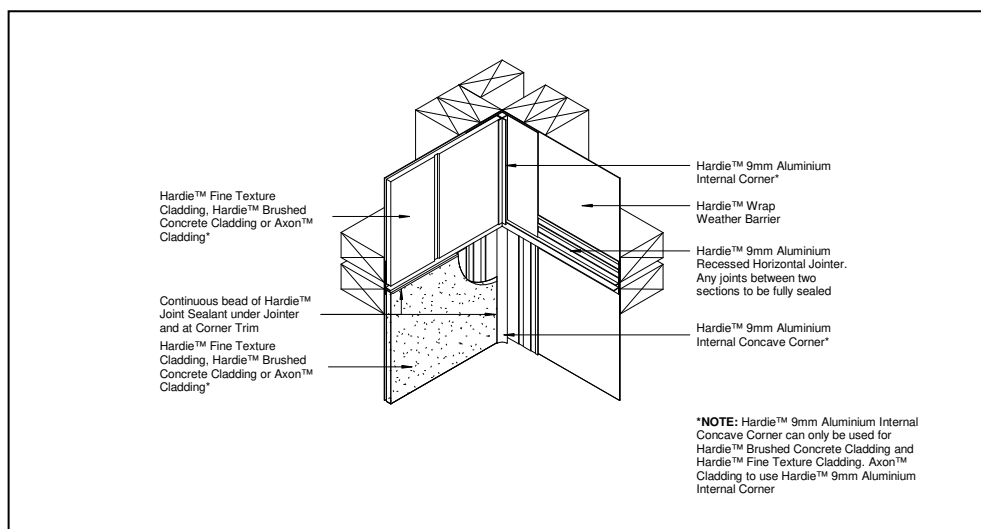
UPPER FLOOR JUNCTION DIRECT FIX

AUS-HAC-PANEL-PANEL-DF-006



EXTERNAL CORNER HORIZONTAL JUNCTION DIRECT FIX

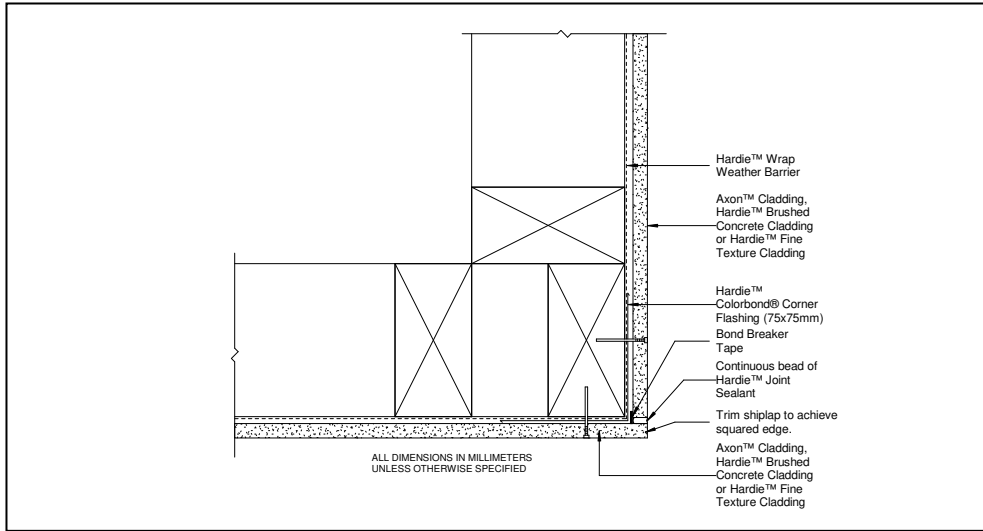
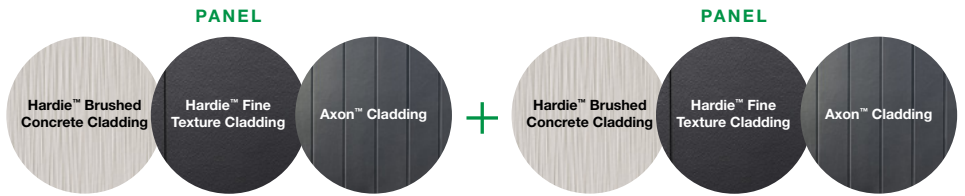
AUS-HAC-PANEL-PANEL-DF-007



INTERNAL CORNER HORIZONTAL JUNCTION DIRECT FIX

AUS-HAC-PANEL-PANEL-DF-008

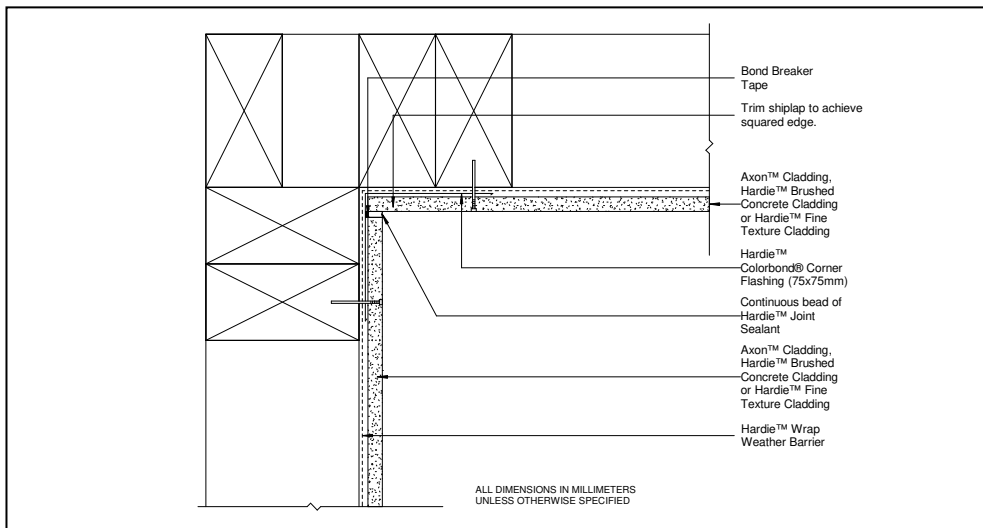
1 DIRECT FIX



EXTERNAL CORNER VERTICAL JUNCTION DIRECT FIX



AUS-HAC-PANELPANEL-DF-009



INTERNAL CORNER VERTICAL JUNCTION DIRECT FIX

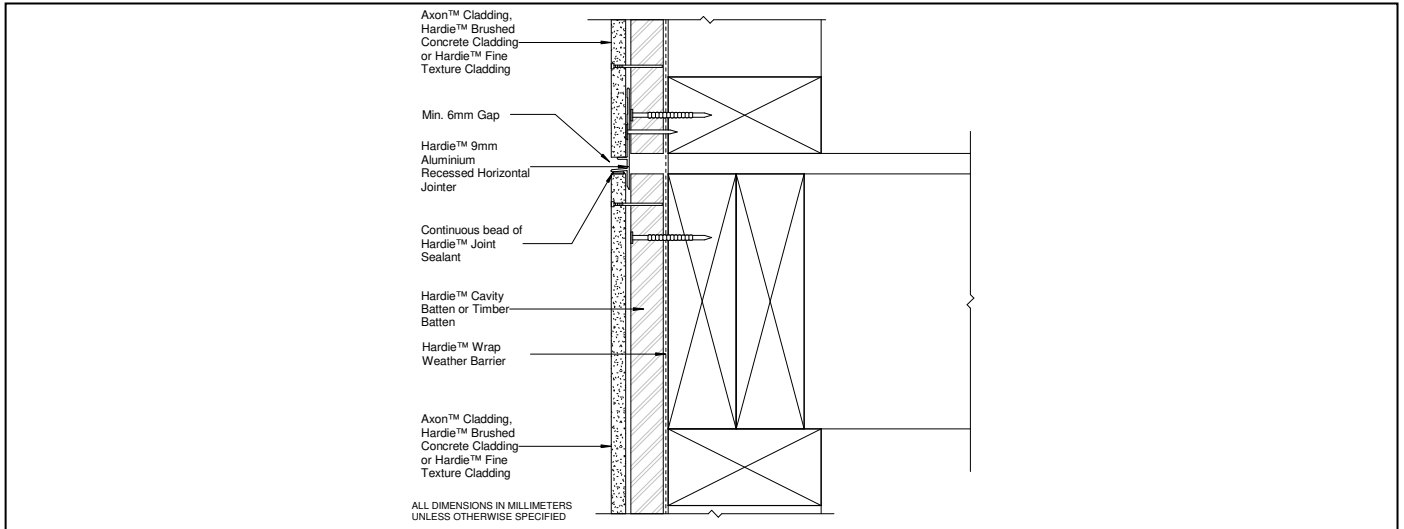
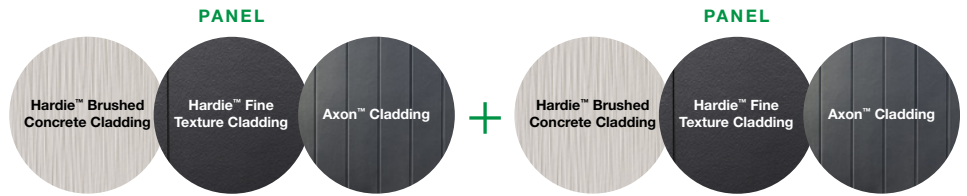


AUS-HAC-PANELPANEL-DF-010

IMPORTANT INFORMATION

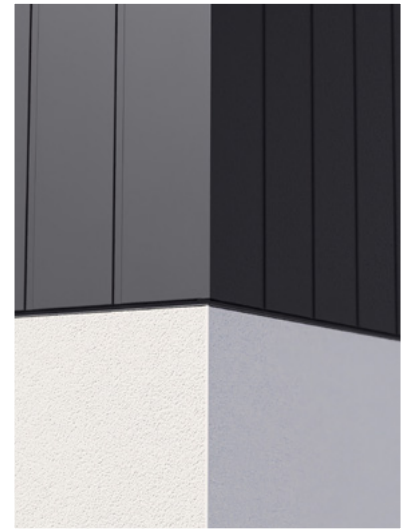
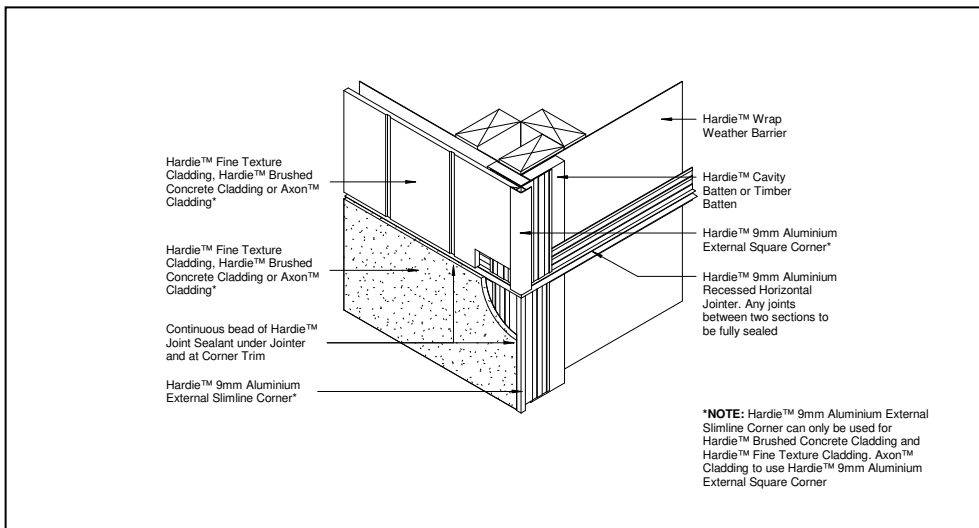
The information in this technical detail is given as a guide and is intended for use in relation to the relevant Hardie™ products only. The customer's project designer is ultimately responsible for design and detailing to ensure the relevant product use, in conjunction with these details, is fit for purpose in the context of the specific project. The customer's project designer needs to give extra consideration to product suitability to take into account any specialised factors of the project. The specific joint/junction detail must be reviewed in conjunction with the relevant Hardie™ product installation guide, current at the time of purchase, and all other relevant Hardie™ technical literature.

2 CAVITY FIX



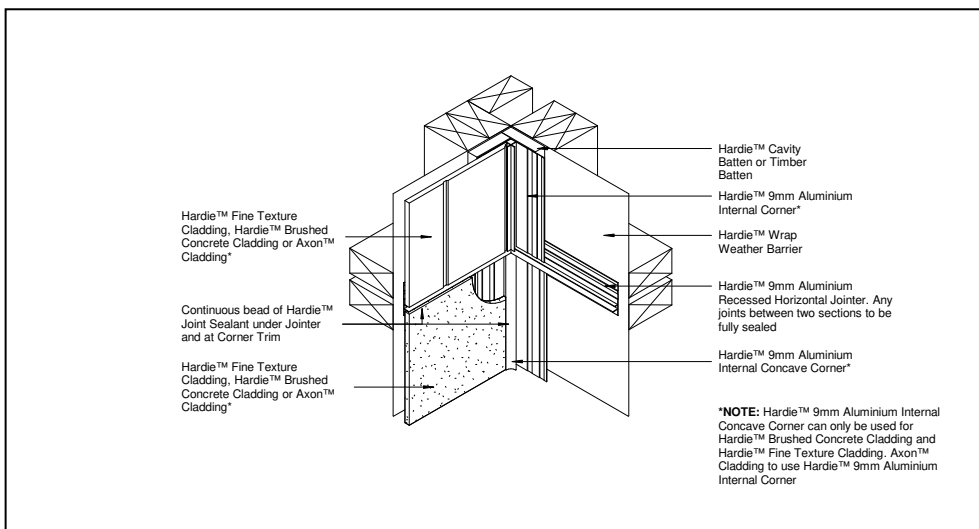
UPPER FLOOR JUNCTION CAVITY FIX

AUS-HAC-PANELPANEL-CF-001



EXTERNAL CORNER HORIZONTAL JUNCTION CAVITY FIX

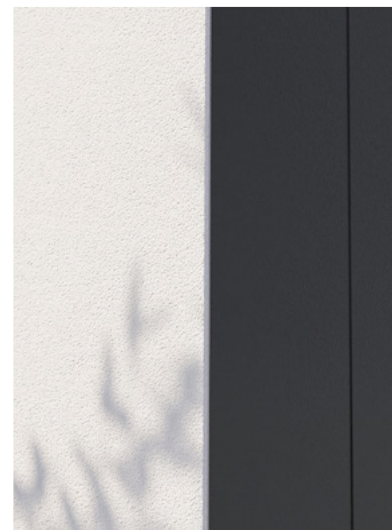
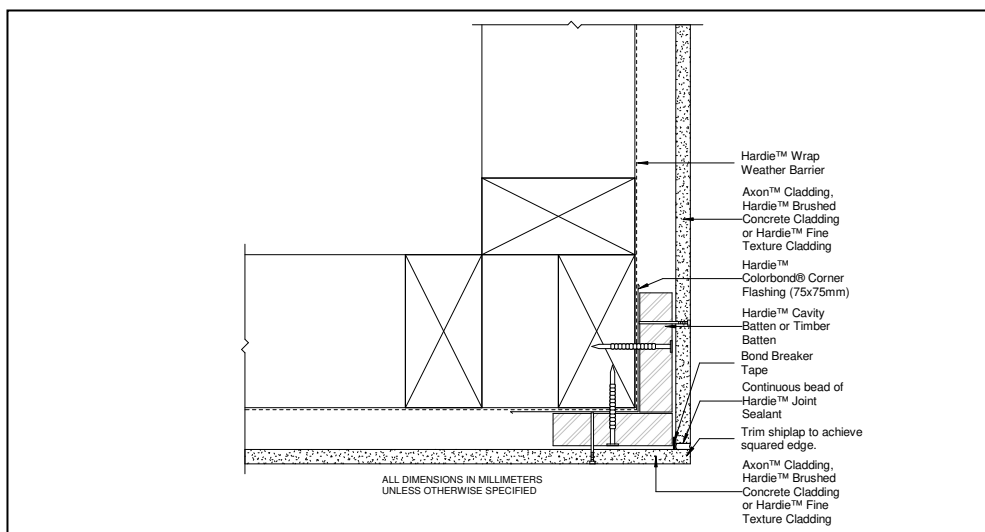
AUS-HAC-PANELPANEL-CF-002



INTERNAL CORNER HORIZONTAL JUNCTION CAVITY FIX

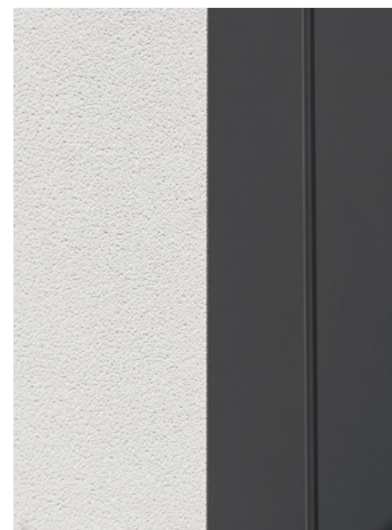
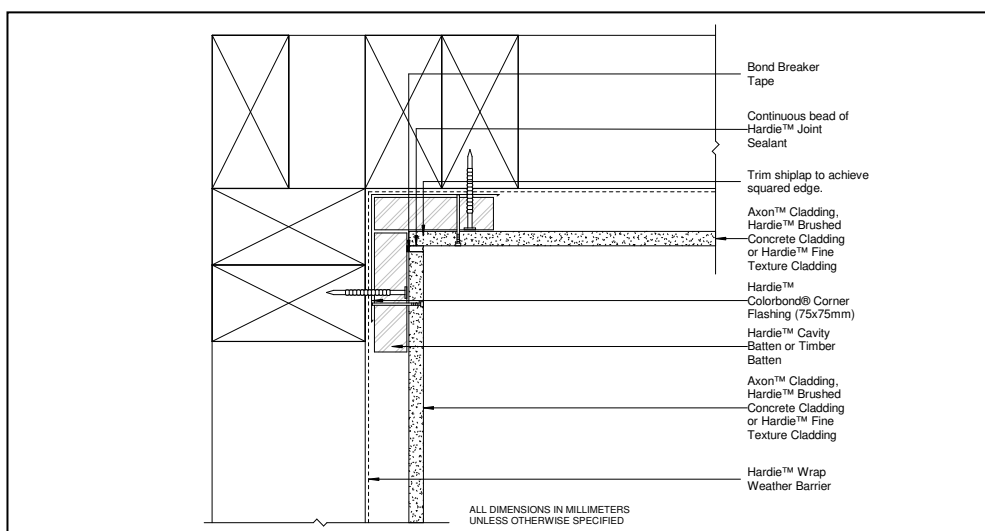
AUS-HAC-PANELPANEL-CF-003

2 CAVITY FIX



EXTERNAL CORNER VERTICAL JUNCTION CAVITY FIX

AUS-HAC-PANELPANEL-CF-004



INTERNAL CORNER VERTICAL JUNCTION CAVITY FIX

AUS-HAC-PANELPANEL-CF-005

IMPORTANT INFORMATION

The information in this technical detail is given as a guide and is intended for use in relation to the relevant Hardie™ products only. The customer's project designer is ultimately responsible for design and detailing to ensure the relevant product use, in conjunction with these details, is fit for purpose in the context of the specific project. The customer's project designer needs to give extra consideration to product suitability to take into account any specialised factors of the project. The specific joint/junction detail must be reviewed in conjunction with the relevant Hardie™ product installation guide, current at the time of purchase, and all other relevant Hardie™ technical literature.



Where to next?



BIM Downloads

Design and specify Hardie™ Exterior Cladding Solutions with ease using our Revit®, Archicad® and CAD libraries.

[The Revit® library](#) has been created to a best practices standard to ensure ease of use, documentation output, quality visualisation, and performance in a project environment.

For [Archicad® users](#), a corresponding library of parametric, intuitive Archicad® content developed 100% natively in GDL is available, as is a library of Drafting View CAD blocks for AutoCAD users. Construction Detail Sheets for the range can be downloaded in Revit®, PDF, DWG and image formats.

Helpful Resources

[Hardie™ Architectural Collection Lookbook](#)

Discover the endless design possibilities of our new curated cladding collection. Everything you need to know, available in this interactive lookbook, from dream home inspiration to real-life case studies, top tips from industry experts and distinctive cladding combinations.

Discover all the inspiration and advice you need to make your home dreams a reality at [Hardie™ Home Guide](#). Our experts and visionary partners are there to help.

Visit our [Technical Library](#) for the product warranty information, safety data, installation guides, technical supplements and application guides you need when creating homes that exceed your clients' expectations.

To see our cladding range in person, visit our [Find a Display tool](#).

Order a Sample

Experience our curated collection with a free sample. Trial your colour options by painting your sample with a low-sheen exterior paint, then see how all of your selections work together to ensure a cohesive palette. Our samples are cut to approximately 20cm x 20cm.





**For information and advice
call 13 11 03 | jameshardie.com.au**

Australia August 2024



©2024 James Hardie Australia Pty Ltd ABN 12 084 635 558.
™ and ® denote a trademark or registered trademark owned by James Hardie Technology Ltd.
Revit® & Archicad® are trademarks of their respective owners.